

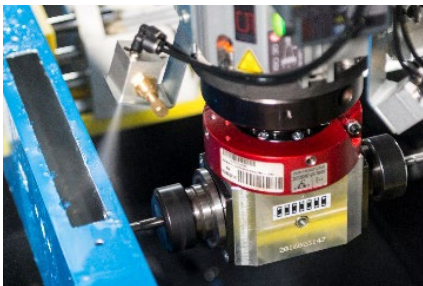
GARNET XS

CNC Controlled Profile Machining Center (3 + 1 Axis)

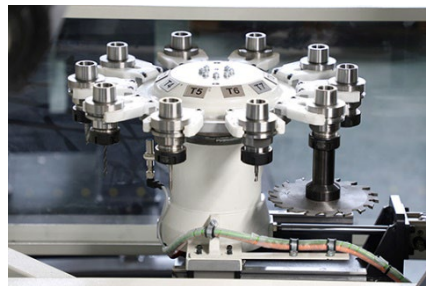


FEATURES

Thanks to its spindle, the 3+1 axis CNC machining center, GARNET XS can machine different sizes of aluminum profiles and offer a wide spectrum of solutions to the user. The machine is developed to carry out all-in-one milling, drilling, machining, marking and end milling operations on aluminum profiles, and to perform custom operations on different profiles. The high processing capacity 11 13/16" x 10 7/16" (300mm x 265mm) provides satisfactory user experience with the machines' performance in all operations.



By focusing on providing convenient solutions for customers, and combining power and precision, GARNET XS lets the processing capacity be only limited by the users imagination, thanks to the 5.5 kW spindle motor with automatic tool replacement feature.



Thanks to its built-in automatic magazine with capacity for 8+1 tools, GARNET XS saves time when switching to different operations.



With full automatic clamp positioning, GARNET automates many tasks assuming the work load of the user.

The product data, descriptions and illustrations are shown for advertising purpose in this document and Oz Machine, reserves the right to make modifications or improvements on data, descriptions and illustrations on this document without prior notice.

MACHINING LENGTHS

X Axis (Longitudinal)	118 1/8" (3000mm)
Y Axis (Lateral)	11 13/16" (300mm)
Z Axis (Vertical)	10 7/16" (265mm)
Fixed angles with angular head	-90° 0 +90°

POSITIONING SPEED

X Axis (Longitudinal)	4990" (126m) / min
Y Axis (Lateral)	1570" (95m) / min
Z Axis (Vertical)	384" (9m) / min

SPINDLE

Maximum power	5.5 kW
Maximum rotation speed	24000 rpm
Tool holder	ISO 30
Cooling type	Electro Fan

TOOL STORAGE

Tool storage system with stationary ATC	●
Maximum tool storage system number with stationary ATC	8 + 1
Tool storage system with rotary ATC	○
Maximum tool storage system number with rotary ATC	10 + 1
Maximum saw blade diameter in to the storage system	5 15/16" (150mm)

TAPPING CAPACITY

With compensator chuck	M8
Rigid tapping	○

PROCESSABLE UNITS

With direct tool (upper surface, lateral surfaces, heads)	5
With saw blade (upper surface, heads)	3

PROFILE POSITIONING

Right and left pneumatic profile reference alignment	●
--	---

CONTROL UNIT

Touchscreen	15" HMI
Remote access	●
Data transfer via Ethernet and USB	●
Barcode reader	○
Industrial PC	○
Smart CAM post processing	●

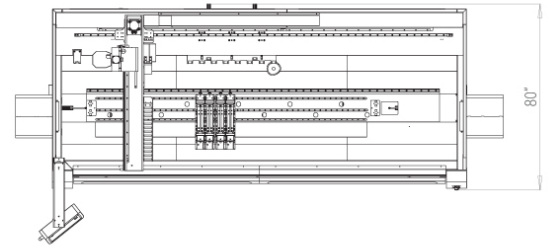
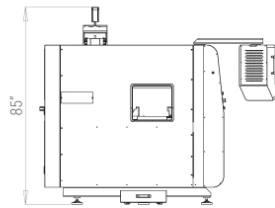
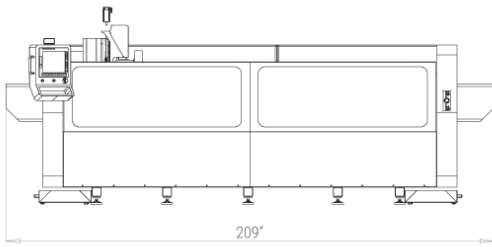
OPERATIONAL AREA

Clamps, standard quantity	4
Clamps, maximum quantity	6
Automatic clamp positioning on X-axis	●
Automatic lubrication in processing area	●
Full guard cabin	●
Side Tunnels	○

The product data, descriptions and illustrations are shown for advertising purpose in this document and Oz Machine, reserves the right to make modifications or improvements on data, descriptions and illustrations on this document without prior notice.

GARNET XS

CNC Controlled Profile Machining Center (3 + 1 Axis)



The product data, descriptions and illustrations are shown for advertising purpose in this document and Oz Machine, reserves the right to make modifications or improvements on data, descriptions and illustrations on this document without prior notice.